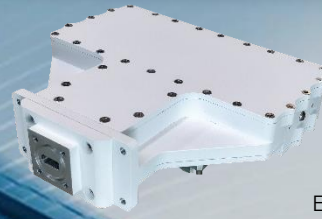


Ka-BAND LOW NOISE BLOCK (LNB)

ACLNBW-Ka-E33-V3

Wideband Series Simultaneous Outputs



Ed.03

30/01/18



ACLNBW-Ka Wideband Series has been designed to meet restrictive specifications for Ka Band communication systems. The equipment has a typical gain of 60 dB with a noise figure lower than 1.8 dB, with low weight and dimensions. Single input and simultaneous output ports are provided so no channel selection is needed.

ACLNBW-Ka Wideband Series has been tested over the specified temperature range, providing good gain stability with temperature and very high reliability.

RECEIVER SPECIFICATIONS

Input frequency	17.7 to 21.2 GHz
Input Ka-band VSWR (50 Ω)	< 1.5:1
Output frequency.....	1000 to 2000 MHz
Output L-band VSWR (50 Ω).....	< 2.0:1
Spectrum inversion	None
Maximum input level without damage.....	0 dBm
Gain	> 60 dB
Gain flatness over the whole channel bandwidth	± 2.0 dB
Gain flatness over any 40 MHz.....	± 0.5 dB
Gain stability over 24 hours	± 0.25 dB @ constant temperature
Gain variation over temperature.....	± 1.5 dB over the whole range
Noise figure @ 25°C	≤ 1.8 dB (1.5 dB typ)
Image rejection.....	> 40 dB
Output P1dB	> +10 dBm
In-Band Spurious.....	< -60 dBc @ Pout = 0 dBm
Output phase noise (IESS-308/309 – 5 dB)	
100 Hz	-65 dBc/Hz
1 kHz.....	-75 dBc/Hz
10 kHz	-85 dBc/Hz
100 kHz.....	-95 dBc/Hz
External reference	10 MHz / 0 dBm ± 5 dB
DC input voltage	12-24 V _{DC}
DC current consumption @ 24 V _{DC}	500 mA typ (125 mA typ each channel)
Storage temperature	-40 to +85°C
Operating temperature.....	-20 to +60°C
Relative humidity	up to 100%
Operating altitude.....	up to 4500 m
Interfaces	
RX input (Ka-Band)	WR42 grooved (PBR 220)
RX outputs (L-Band+DC+Ext. Ref. @ each port)	Type N(F) 50 Ω
Dimensions	140 x 155 x 40 mm / 5.5 x 6.1 x 1.6 inches
Weight	950 g / 2.1 lbs
Finish	RAL 9003 (White)

Ka-band input	L-band output	LO frequency	Output port	Standard frequency option
17.7 to 18.2 GHz	1000 to 1500 MHz	16.700 GHz	1	ACLNBW-Ka-E33-V3
18.2 to 19.2 GHz	1000 to 2000 MHz	17.200 GHz	2	
19.2 to 20.2 GHz	1000 to 2000 MHz	18.200 GHz	3	
20.2 to 21.2 GHz	1000 to 2000 MHz	19.200 GHz	4	

LN1:	RX output connector type SMA(F) 50 Ω
LN2:	Operating temperature -40 to +60°C
LN3:	Internal reference (ACLNBW-Ka-E33-V3 freq. stability ±1 ppm)
LN4:	Supply & external reference using only single port

Any other frequency band or custom specification available under request. Please, contact factory. Specifications are subject to change without notice.