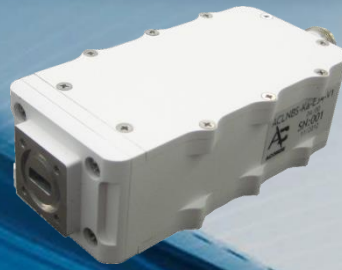


# Ka-BAND LOW NOISE BLOCK (LNB)

ACLNBS-Ka-Ex-V3

Standard Series



Ed.11

05/10/16



**ACLNBS-Ka Standard Series has been designed to meet restrictive specifications for Ka Band communication systems. The equipment has a typical gain of 60 dB with a noise figure lower than 1.5 dB, with low weight and dimensions.**

**ACLNBS-Ka Standard Series has been tested over the specified temperature range, providing good gain stability with temperature and very high reliability.**

## RECEIVER SPECIFICATIONS

Input frequency .....	19.2 to 22.2 GHz (See options)
Input Ka-band VSWR (50 Ω) .....	< 1.3:1
Output frequency.....	950 to 2000 MHz (See options)
Output L-band VSWR (50 Ω).....	< 2.0:1
Spectrum inversion .....	None
Maximum input level without damage.....	0 dBm
Gain .....	> 60 dB
Gain flatness over the whole bandwidth .....	± 2.0 dB
Gain stability over 24 hours .....	± 0.25 dB @ constant temperature
Gain variation over temperature.....	± 2.0 dB over the whole range

Noise figure @ 25°C .....	≤ 1.5 dB
Image rejection.....	> 45 dB
Output P1dB .....	> +10 dBm
In-Band Spurious.....	< -60 dBc @ Pout = 0 dBm

### Output phase noise typical (IESS-308/309 – 5 dB)

100 Hz .....	-65 dBc/Hz
1 kHz.....	-75 dBc/Hz
10 kHz .....	-85 dBc/Hz
100 kHz.....	-95 dBc/Hz
External reference (multiplexed on L-band output) .....	10 MHz / 0 dBm ± 5 dB
DC input voltage (multiplexed on L-band output) .....	9-15 V <sub>DC</sub>
DC current consumption .....	370 mA

Storage temperature .....	-40 to +85°C
Operating temperature.....	-20 to +60°C
Relative humidity .....	up to 100%
Operating altitude.....	up to 4500 m

### Interfaces

RX input (Ka-Band) .....	WR42 grooved (PBR 220)
RX output (L-Band+DC+External Reference) .....	Type N(F) 50 Ω
Dimensions .....	114 x 58 x 36 mm / 4.5 x 2.3 x 1.4 inches
Weight .....	350 g / 0.8 lbs
Finish .....	RAL 9003 (White)

Ka-band input	L-band output	LO frequency	Standard frequency option
19.2 to 20.2 GHz	1000 to 2000 MHz	18.200 GHz	ACLNBS-Ka-E1-V3
20.2 to 21.2 GHz	1000 to 2000 MHz	19.200 GHz	ACLNBS-Ka-E2-V3
20.2 to 21.2 GHz	950 to 1950 MHz	19.250 GHz	ACLNBS-Ka-E22-V3
21.2 to 22.2 GHz	1000 to 2000 MHz	20.200 GHz	ACLNBS-Ka-E60-V3

LN1: .....	RX output connector type SMA(F) 50 Ω
LN2: .....	Operating temperature -40 to +60°C
LN3: .....	Internal reference (ACLNBSI-Ka-Ex-V3 freq. stability ±1 ppm)

Any other frequency band or custom specification available under request. Please, contact factory. Specifications are subject to change without notice.